

## PROJECT OVERVIEW

In accordance with Cook County's long-term goals outlined in *Connecting Cook County* as well as the *Cook County Freight Plan*, the Cook County Department of Transportation and Highways (Cook County DoTH) has initiated the Burnham Multimodal Connector Preliminary Engineering and Environmental (Phase I) Study. This Phase I Study will evaluate the existing conditions and design of a pedestrian and bicyclist bridge which will provide access to the Hegewisch Station, the planned Burnham Greenway Trail in the City of Chicago and the proposed Burnham Greenway Trail in the Village of Burnham. The purpose of this project is to provide a safe connection for pedestrians and bicyclists by providing a bridge above the rail tracks and Brainard Avenue, increasing multimodal connections to transit, and improve community mobility and recreational options.

This Phase I Study will develop the proposed bridge alignment and design based on stakeholders' input, and examine the potential impacts on the community and environment.

### PROJECT BENEFITS



Safety Improvements



Pedestrian and Bicyclist Access



Multimodal Connections



Community Benefits

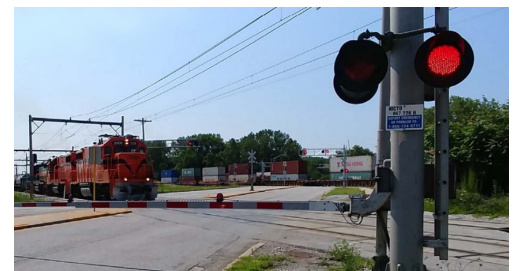
## EXISTING CONDITIONS



Left: View from above showing the five sets of railroad tracks that cross Burnham Avenue within a short distance.

Top: The sidewalk along Burnham Avenue at the railroad tracks does not provide safe crossing options for pedestrians or bicyclists.

Right: View from Burnham Avenue of multiple trains crossing simultaneously.



## KEY GOALS ADDRESSED



### PRIORITIZE:

Transit and other transportation alternatives



### PROMOTE:

Equal access to opportunities



### HEALTHY COMMUNITIES:

Health and wellness



### SUSTAINABLE COMMUNITIES:

Environment and sustainability



### SMART COMMUNITIES:

Public infrastructure



[illegible]

**2020** **2021**

**SUMMER 2020** **SM** **SPRING 2021** **PM**

SPRING | SUMMER | FALL | WINTER | SPRING | SUMMER

Gather Project Information | Identify and Evaluate Alternatives | Determine and Finalize Recommended Alternative | Approve Recommended Alternative

Stakeholder Engagement

**SM** Stakeholder Coordination Meetings  
**PM** Public Information Meeting

**2022-2025**  
Phase II: Detailed Design (Approx. 18-24 months) | Phase III: Construction (Approx. 18-24 months)



## LEGISLATIVE DISTRICTS

Illinois House District:  
2nd Congressional District

Illinois Senate District:  
District 17

City of Chicago:  
10th Ward

Cook County Board District:  
District 4

- Chicago Department of Transportation (CDOT)
- Chicago South Shore & South Bend Railroad (CSS)
- City of Chicago – 10th Ward Alderwoman
- Commonwealth Edison
- CRRC Sifang America
- CSX Railroad
- Illinois Department of Natural Resources (IDNR)
- Illinois Department of Transportation (IDOT)

- Metra
- Norfolk Southern Railroad
- Northern Indiana Commuter Transportation District (NICTD)
- Openlands
- Peoples Gas
- Regional Transportation Authority (RTA)
- The Village of Burnham